

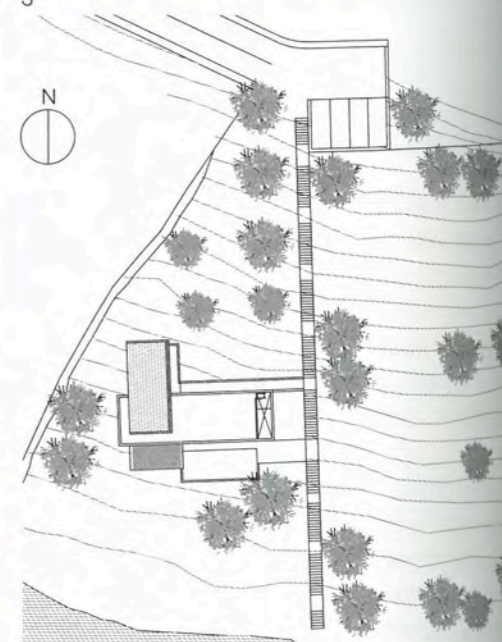
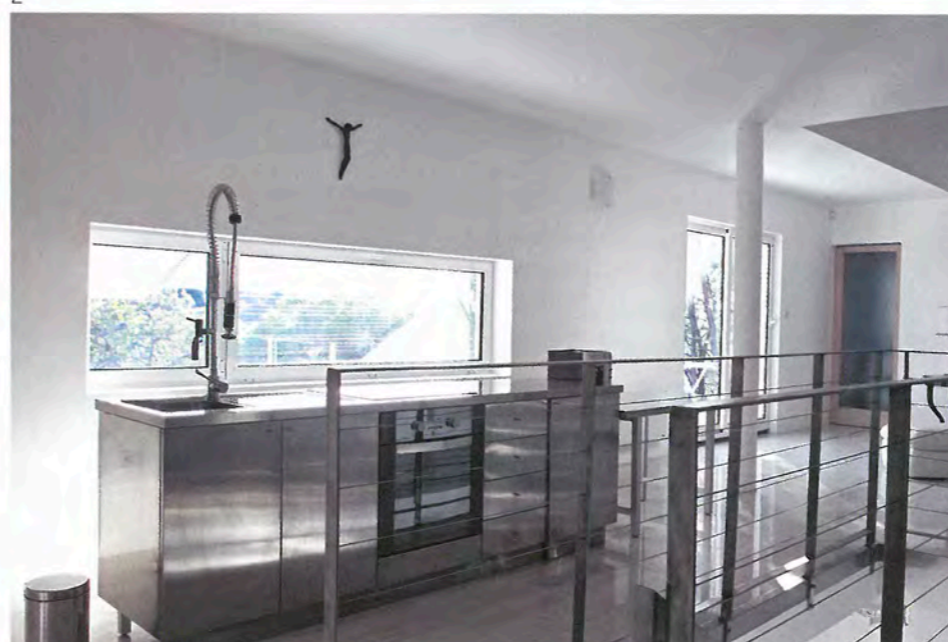
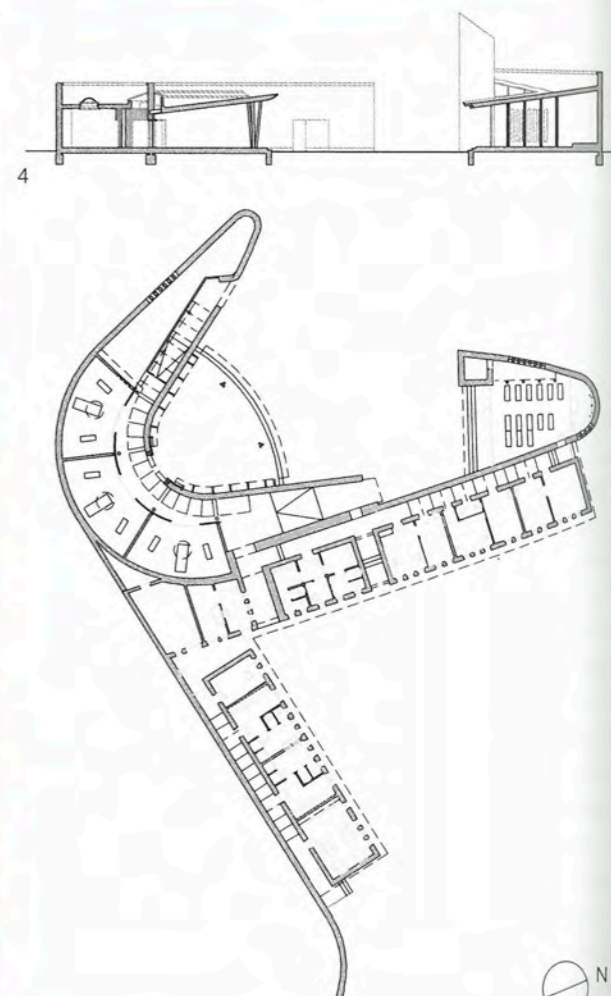
THE
PHANTOM
ATLAS
OF 21ST
CENTURY
WORLD
ARCHITECTURE

0742	Požega, Croatia	Cemetery of Christ the King	Rusan Arhitektura	2006 REL	0740 COM Pula, Croatia
0743	Split, Croatia	Dimov House	312 Arhitektonska Radionica	2005 RES	

0742 This cemetery sits in open fields on the southern edge of Požega. The existing cemeteries in this small city of 20,000 were filled and a new one was required. It caters to both the Catholic and Orthodox churches and has space for 15,000 burial plots. A 200 m (656 ft) red brick wall defines the edge of the site on the roadside and curves to form one of the walls of the building at the entrance. Large iron gates lead from the car park into the site. The building contains a chapel, offices for the clergy and services, and three private rooms containing funeral biers. A canopy supported by two triple columns stretches over the external space of the main entrance. Underneath, wide copper doors open into a corridor with a glazed ceiling, which is separated from the private chambers by a wall of glass bricks. An L-shaped building, with an arm bordering the car park containing services and the other containing offices, backs into the wall of glass bricks. The chapel, another curved building, is at the far end of the row of offices. The chapel has unpolished granite flooring, a curved and bare brick wall, a glazed entrance wall and a panelled wood ceiling. The altar and benches are made of Slavonian oak. On the outside is a rectangular bell tower. Brick was chosen as the principal material for the load-bearing walls of the building and for the walls separating the clusters of burial plots. It is the most common building material used locally and cheaper bricks and seconds were sourced to give a softer appearance.

- 1 Main entrance to building
- 2 View from canopy to chapel building
- 3 Interior of chapel
- 4 Section through buildings
- 5 Ground-floor plan

Client
City of Požega
Area
1,200 m²/12,917 sq ft
Cost
€985,000
Coordinates
45.3378 17.6910



0743 This holiday home is situated on Bobovisca bay on the west side of the island of Brač, close to the town of Split. The house is set into the hillside close to a village, in a neglected olive grove which is now overgrown with pine trees. Steps lead down the hill to the seashore, passing close to the eastern end of the house. A path splits off to

covering one end of the otherwise flat-roofed block and forming an open shelter over the entrance and an outdoor cooking area. The entrance leads inside to a living and kitchen area with a balcony and a central staircase. At the far end of this room is a bedroom and bathroom. Downstairs is another living room, with bedrooms on either side. These three

angled shutters which can be either completely closed, or partially closed to provide shade. The house is a blend of modern and traditional with its cast concrete walls and stone-tiled roof, which break with the modern trend of pastel-coloured villas with terracotta roofs. Inside, the rooms are painted white and have stone floors. The

- 1 View from southeast
- 2 View of living room, deck and pool
- 3 Open living space on top floor
- 4 Pitched roof over entrance
- 5 Interior view showing kitchen
- 6 Site plan

Client
Zoran Dimov
Area
195 m²/2,100 sq ft
Cost
€210,000
Coordinates
43.3499 16.4634

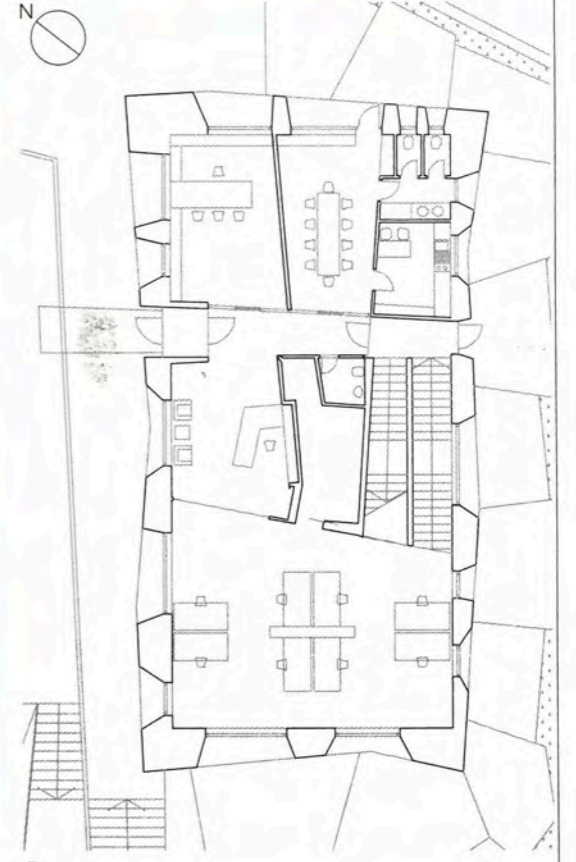


ip building for the lighting
umenart is situated on the
astel-coloured historic
gleaming white building,
ices, design studios and a
aytime, its unique colour
n make it stand out from
night, multicoloured lights
hting designer Dean Skira,
pany, was closely involved
; building. The building has
v-tech structure of load-
with large, span-reinforced
s. Panels of ground glass
r clad the brick to give
re a more organic external
idows are cut into the thick
ap between the bottom of
ne ground is illuminated at
pression that the building
e ground. Inside, the white
provide an ideal backdrop
s. The ceilings have
racks and the floors have

either a white or grey epoxy coating. On the ground floor is a design studio and offices, and glass walls divide the space to give a sense of transparency to the company's operations. Upstairs, a lecture hall makes use of the white walls as projection screens. Angled walls divide the large showroom in the basement to provide maximum wall space for lighting device displays.

- 1 View from southwest
- 2 East facade
- 3 Detail of deep-set windows
- 4 Interior view of staircase
- 5 Ground-floor plan

Client
Lumenart
Area
665 m²/7,158 sq ft
Cost
€1,236,000
Coordinates
44.8692 13.8464



orial museum is located on
War II concentration camp
atia, on the border with
govina. Founded shortly
aded the then Yugoslavia in
a regime of the Independent
was the largest of a network
untry. The camp was
in April 1945. A museum
on the site in 1968, when
rt of Yugoslavia. Following
0s, the area became part
Croatia. The museum was
the war and this new
ted by the Ministry of
acement. The museum's
educate visitors in the hope
ccide from happening, by
s as individuals with
The new exhibition is set in
r and comprises rubber-
s supporting display panels
of the site. These panels
id projection screens and
y artefacts from the camp.

Above, the names of the victims are inscribed on hanging glass panels supported by steel beams and columns, symbolizing the fragility of human life and the potential dangers facing it.

- 1 View of museum from camp grounds
- 2 Steel trusses and ceiling detail
- 3 Interior of exhibition space
- 4 Ground-floor plan

Client
Ministry of Culture, Republic of Croatia
Area
350 m²/3,767 sq ft
Cost
€900,000
Coordinates
45.2703 16.9114

